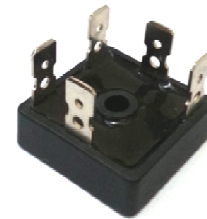
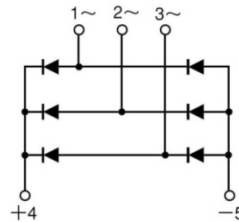


## Three Phase Bridge Rectifier, 25A

### Features

- Easy connections
- Surge capability up to 500A
- Low thermal resistance
- High thermal conductivity
- Electrically insulated case
- Center hole fixing

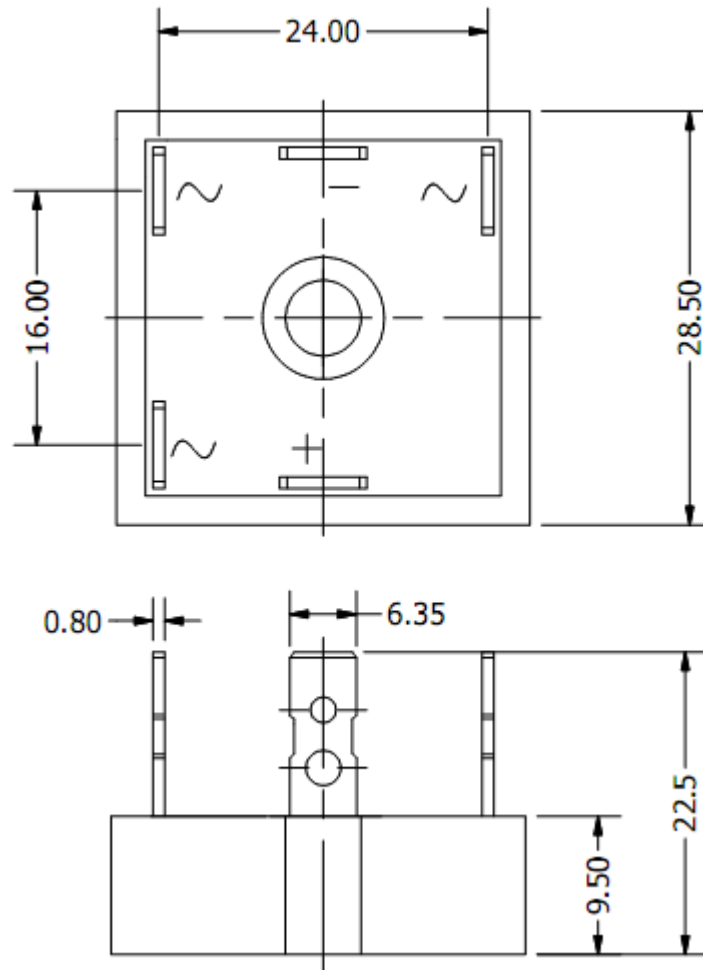


Voltage Ratings ( $T_C = 25^\circ\text{C}$ unless otherwise noted)				
Type number	Voltage code	$V_{RRM}$ , Max. repetitive peak reverse voltage (V)	$V_{RSM}$ , Max. non-repetitive peak reverse voltage (V)	$I_{RRM}$ max @ $T_J$ max (mA)
26MT	80	800	900	2.0
	100	1000	1100	
	120	1200	1300	
	140	1400	1500	
	160	1600	1700	

Electrical Specifications ( $T_C = 25^\circ\text{C}$ unless otherwise noted)				
Parameters	Conditions	Symbol	Values	Units
Maximum DC output current	$T_C = 70^\circ\text{C}$	$I_O$	25	A
Forward surge current (non-repetitive), one cycle	@ 50 Hz	$I_{FSM}$	360	A
Maximum forward voltage drop	$I_{FM} = 40\text{A}$ , $T_J = 25^\circ\text{C}$	$V_{FM}$	1.26	V
RMS isolation voltage	$f = 50\text{Hz}$ , $t = 1\text{ms}$ , all terminals shorted	$V_{ISO}$	2500	V

Thermal and Mechanical Specifications ( $T_C = 25^\circ\text{C}$ unless otherwise noted)				
Parameters		Symbol	Values	Units
Maximum operating junction temperature range		$T_J$	- 55 to + 150	$^\circ\text{C}$
Maximum storage temperature range		$T_{STG}$	- 55 to + 150	$^\circ\text{C}$
Junction to case		$R_{th(j-c)}$	1.2	$^\circ\text{C/W}$
Mounting torque $\pm 10\%$	Bridge to heatsink	F	2.0	Nm
Approximate weight		W	20	g

### Package Outline



ALL DIMENSIONS IN MM

### Ordering Table

26	MT	160
1	2	3

1 – Current Rating,  $I_{F(AV)}$  (26 = 25A, Average)

2 – Three-Phase Bridge

3 – Voltage = code x 10 =  $V_{RRM}$